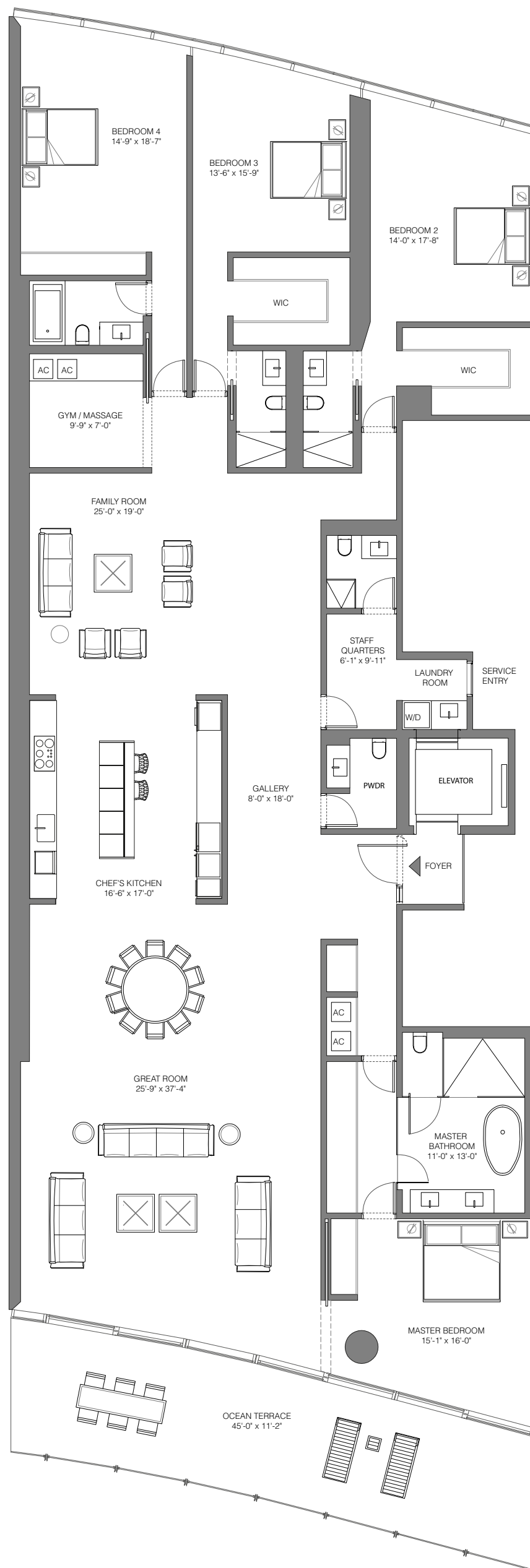


# SOUTH TOWER

(C4) 1005

4 BEDROOMS - 5 BATHROOMS  
POWDER ROOM - FAMILY ROOM

INTERIOR	4,602 SQUARE FEET 428 SQUARE METERS
TERRACES	515 SQUARE FEET 48 SQUARE METERS
TOTAL LIVING	5,117 SQUARE FEET 476 SQUARE METERS

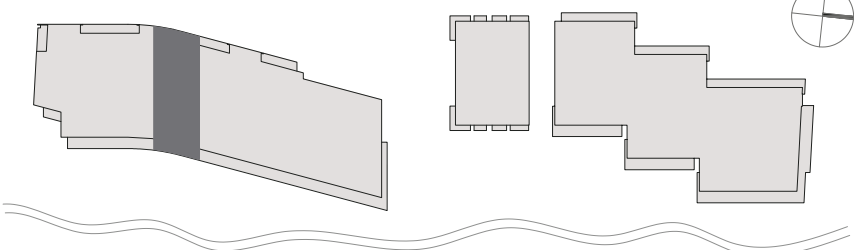


COLLINS AVE

SOUTH TOWER

HOTEL

NORTH TOWER



ATLANTIC OCEAN



EAST ELEVATION

All depictions of furnishings, appliances, built-ins, counters, soffits, floor coverings and other matters of detail, including, without limitation, items of finish and decoration, are conceptual only and are not necessarily included in each Unit. The Developer expressly reserves the right to make modifications, revisions, and changes it deems desirable in its sole and absolute discretion. Stated dimension are measured to the exterior face of exterior walls and to the exterior face of walls adjoining corridors or other common elements. This method of measurement varies from, and is larger than, the dimensions that would be determined by using the description and the definition of the "Unit" set forth in the Declaration (which generally only includes the interior airspace between the perimeter walls and excludes interior structural components). Note that measurements of rooms set forth on this floor plan are generally taken at the greatest points of each given room (as if the room were a perfect rectangle), without regard for any cutouts or irregularities. Accordingly, the area of the actual room will typically be smaller than the product obtained by multiplying the stated length times width. All dimensions are approximate and may vary with actual construction, and all floor plans and development plans are subject to change. FURNITURE, CLOSET BUILD OUT AND DECORATIVE LIGHTING NOT INCLUDED. PLANS NOT TO SCALE.



EQUAL HOUSING OPPORTUNITY